

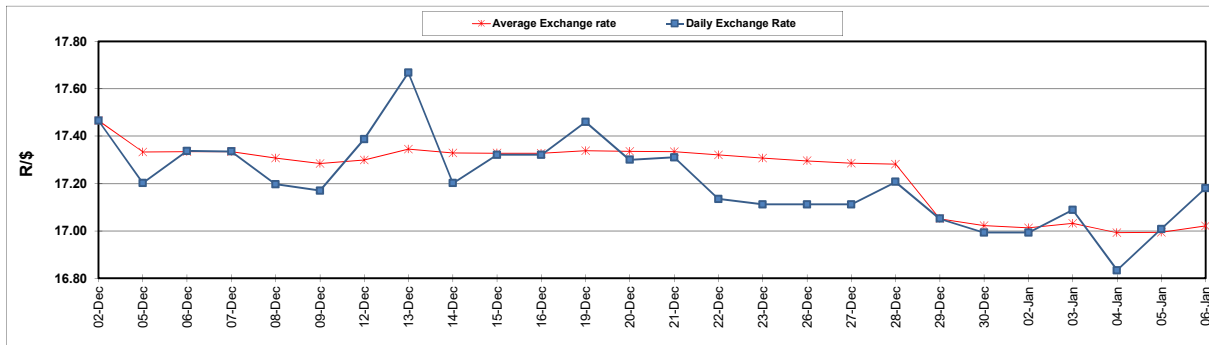
South African Cents per Litre (SA c/l)	PETROL 95 ULP	PETROL 93 ULP & LRP	DIESEL 0.05%	DIESEL 0.005%	ILL. PAR.
GAUTENG PUMP PRICE AS FROM 04/01/205	2,140.000	2,110.000	-	-	-
WHOLESALE PRICE AS FROM 04/01/205	-	-	2,122.870	2,141.270	1,525.958
SINGLE NATIONAL MAXIMUM RETAIL PRICE	-	-	-	-	2,009.000
BASIC FUEL PRICE - 06/01/2023	1,056.725	1,031.315	1,269.717	1,279.125	1,302.945
PRESS RELEASE CONTRIBUTION TO BFP 04/01/2023 - 06/01/2023	1,050.390	1,020.390	1,261.630	1,280.030	1,307.128
UNIT OVER/(UNDER) RECOVERY - 06/01/2023	(6.335)	(10.925)	(8.087)	0.905	4.183
AVERAGE BASIC FUEL PRICE 29/12/2022 - 06/01/2023	1,081.153	1,057.344	1,281.640	1,292.415	1,320.246
AVERAGE UNIT OVER/(UNDER) RECOVERY 29/12/2022 - 06/01/2023	74.437	68.246	121.133	135.615	97.167

### ANALYSIS MOVEMENT OF AVERAGE OVER/(UNDER) RECOVERY

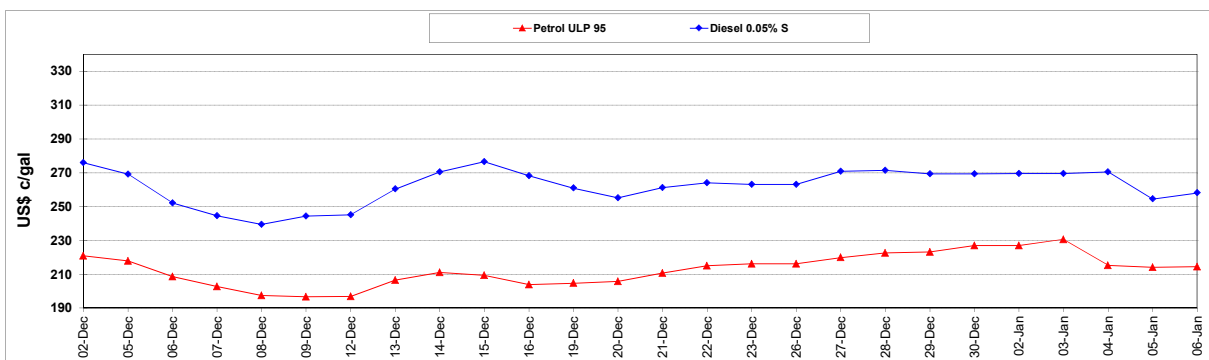
	PETROL 95	PETROL 93	DIESEL 0.05%	DIESEL 0.005%	ILL. PAR.
- MOVEMENT IN INTERNATIONAL PRODUCT PRICES	62.629	56.698	107.135	121.499	82.748
- MOVEMENT IN EXCHANGE RATE	11.808	11.548	13.998	14.116	14.420
AVERAGE UNIT OVER/(UNDER) RECOVERY 29/12/2022 - 06/01/2023	74.437	68.246	121.133	135.615	97.167

### R/\$ EXCHANGE RATE - (R/\$17.1800 - 06/01/2023)

#### EXCHANGE RATE USED IN BASIC FUEL PRICE



#### INTERNATIONAL PRODUCT PRICES OF BASKET USED IN BASIC FUEL PRICE



#### BASIC FUEL PRICE IN SA CENTS PER LITRE

